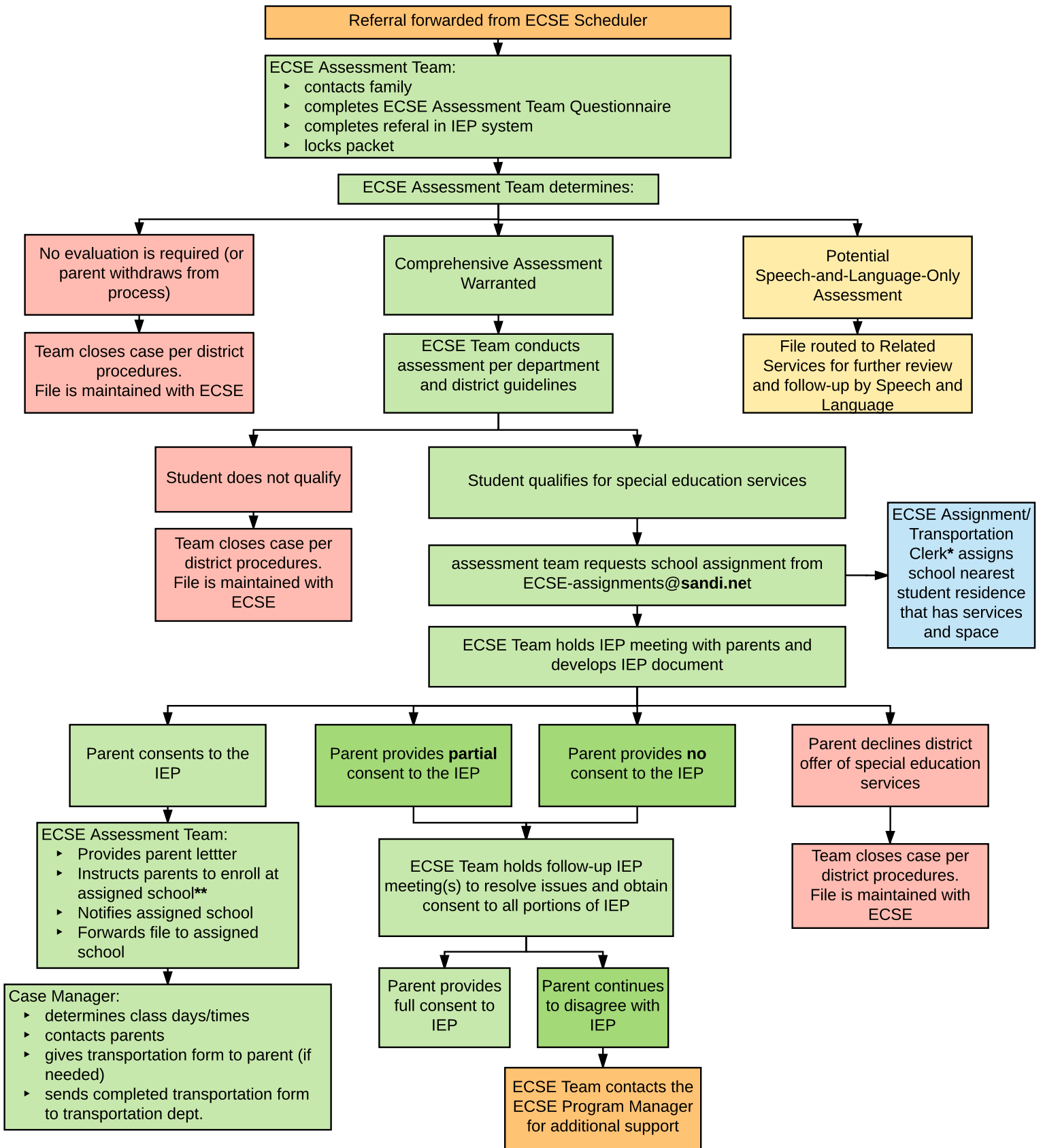


ECSE Assessment Team Process



*ECSE Assignment/Transportation clerk maintains master caseload list of ECSE sites and works with Program Manager to maintain balance of caseloads per contract, bus routes, and submission of ECSE F-12s.

**During the last 60 days of a school year, a parent may request to wait and have their child enroll at the beginning of the next school year. The Assessment team shall document the parent request, and update the service/goals to begin on the first day of the next school year.